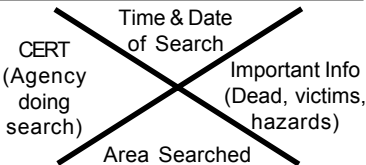
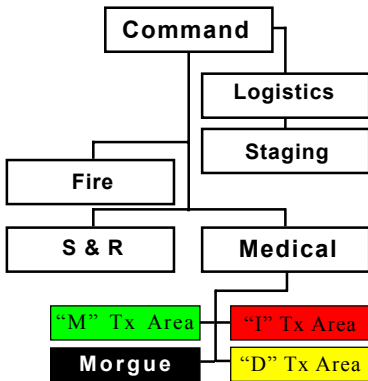


# CERT I.C.S.

INCIDENT COMMAND SYSTEM



Pima County CERT

## YOUR HOME & YOUR FAMILY COME FIRST

Make sure your home and family are taken care of. Shut off utilities if necessary. (If you smell gas, smell smoke, or see fire.) Assess your home for structural damage. Turn off utilities if you are going to leave your home.

**ASSIST YOUR NEIGHBORS**

**WORK WITH A BUDDY**

**SIZE-UP ALL SITUATIONS**

Is it too dangerous? If yes, walk (run) away. Report to appropriate agency.

## SEARCH & RESCUE

**Lightly damaged** - Search, Triage, & Treat victims where you find them. Evacuate victims to treatment areas as needed.

**Moderate damage** - Search & Evacuate victims as you find them.

**Heavily Damaged** - STAY OUT!



=



If greater than 1 in any area. It's too dangerous to enter into an unknown situation

## CERT ASSEMBLY

If your home and neighborhood are stable and you want to do more...

**ASSEMBLE AT YOUR LOCAL TEAM MEETING PLACE**

**CERT HAM RADIO OPERATORS**

CERT Emergency HAM Net

(Meet On-air Mon. 1930-2000)

147.300 , PL110.9, +600/146.58 Simplex

**TO VOLUNTEER FOR A CERT EFFORT**

Contact your local Fire Station